

# Stepper-Motor Howard Ind. P/N 1-19-4202 \*

Best.Nr. 310 232

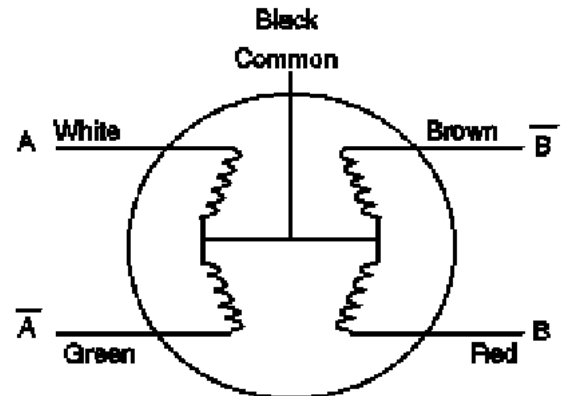
\* Baugleich mit Jameco SM4202 (Part.Nr. 105873)

**Specifications:**

- Unipolar (4 Phase)
- 12 VDC, 150mA
- Coil: 75 Ohm, 43mH
- 3.6 degrees/step
- Shaft: 0.19"D x 0.43"L
- Mounting Hole Spacing: 1.73"
- Mounting Hole Diameter: 0.11"
- Motor: 1.66"D x 1.35"H
- Detent Torque: 80 g-cm
- Holding Torque: 504 g-cm
- Weight: 0.5 Lbs.

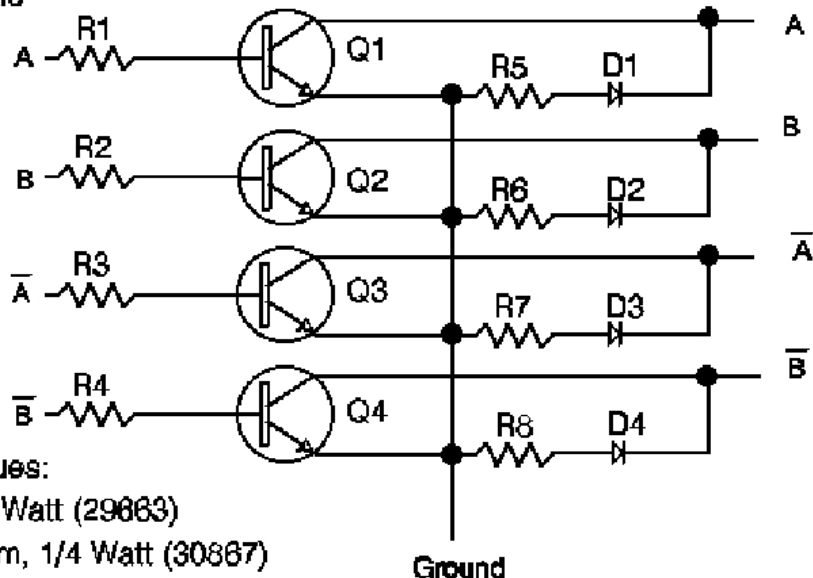
**Applications:**

- Automation
- Robotic Control
- Precision Mechanical Control



Step	A	B	Ā	B̄	Common
1	-	-			+
2		-	-		+
3			-	-	+
4	-			-	+
5	-	-			+

**Driver Schematic**



**Suggested Values:**

- R1-R4=1K, 1/4 Watt (29863)
- R5-R8=330 Ohm, 1/4 Watt (30867)
- Q1-Q4=MJE3055T (25857)
- D1-D4=1N4003 (78970)